

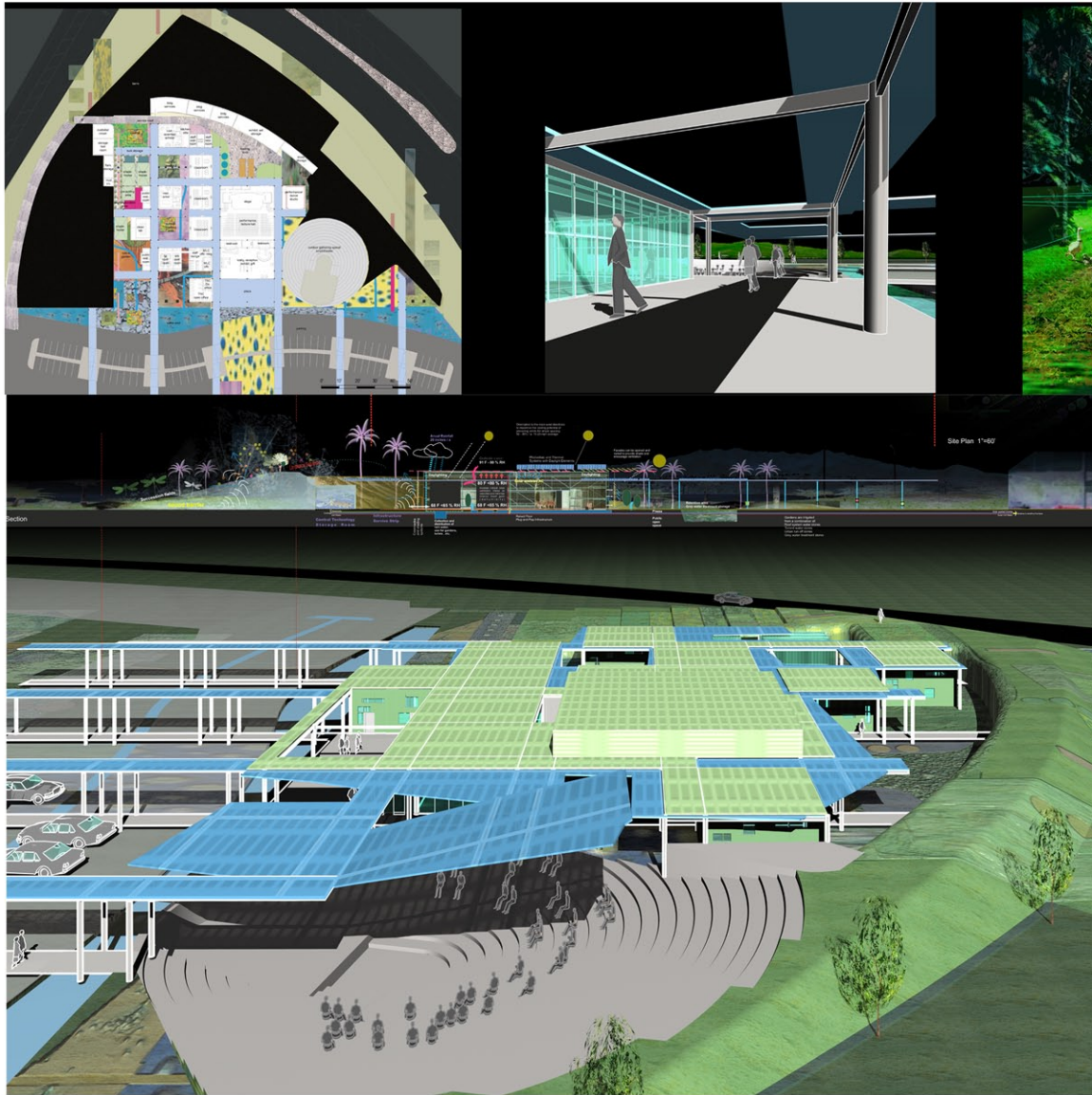


The Robert H. Timme, F.A.I.A. Graduate Research Center at the USC School of Architecture, Los Angeles, California, USA  
Project scope: CK-Architecture as Design Architects  
Completed: 2006  
Client: USC, Capital Construction Development  
Size: 23,000 sq. ft.  
Budget: \$ 8.2 million  
Executive Architect: A.C. Martin & Partners  
Consultants:  
Structural: Walter P. Moore & Assoc.  
HVAC: IBE  
Lighting: Kaplan Gehring McCarroll

EDUCATIONAL

**CK**  
ARCHITECTURE

christoph kapeller, aia    639 s.spring st. suite 4a, los angeles, ca 90014,    t.: (213) 488-3360    f.: (213) 488-4988  
[www.ck-architecture.com](http://www.ck-architecture.com)



Malama Learning Center, Oahu, Hawaii, USA

Meritorious Award: International Design Competition: 2004

Organizer: The Nature Conservancy

Project scope: competition design

Project size: 28,000 sq. ft.

Christoph Kapeller in collaboration with Mitchell De Jarnett and Thomas Spiegelhalter

Team: Shana Yates, Kirsten Moore

Given the history of Hawaii as the extinction capital of the world, the design of the new Malama Learning Center proposes to organize the site as a series of succession fields. The fields are laid out along the Ahupua'a bands. Reaching into the existing campus, the succession fields provide a project based learning facility and transform the entire campus biologically and visually. The Hawaiian climate conditions and temperature permit outdoor activities during the entire year. The design for the new learning center transforms the traditional concept of the Lanai into a high-tech shading device.

[http://www.malamalearningcenter.org/winners\\_4.asp](http://www.malamalearningcenter.org/winners_4.asp)

EDUCATIONAL

**CK**  
ARCHITECTURE

christoph kapeller, aia

639 s.spring st. suite 4a, los angeles, ca 90014,

[www.ck-architecture.com](http://www.ck-architecture.com)

t.: (213) 488-3360

f.: (213) 488-4988